

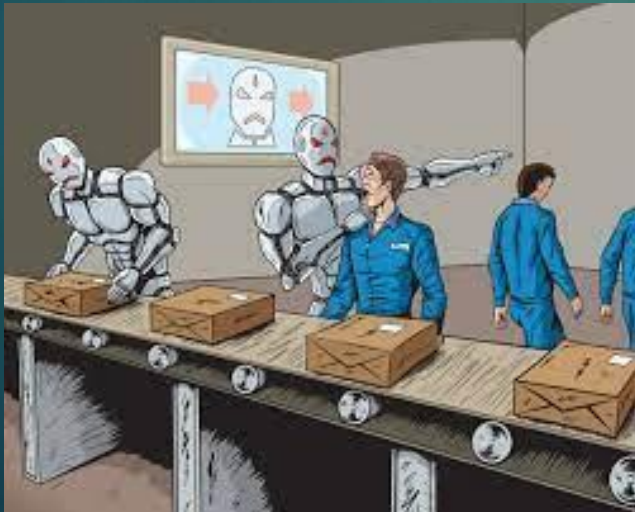
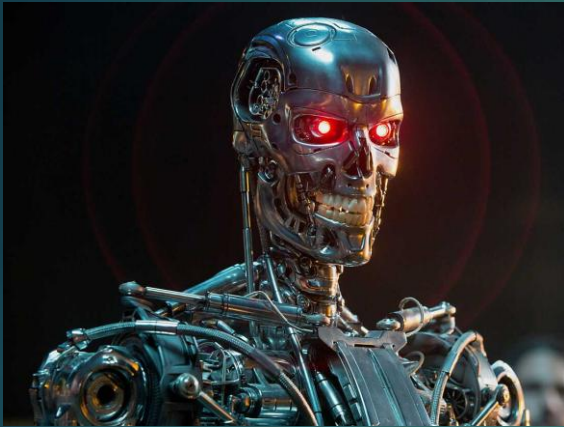
# ARTIFICIAL INTELLIGENCE READINESS IN HEALTH SCIENCE EDUCATION AND RESEARCH

DR NANDI MWASE: DEPARTMENT OF FAMILY MEDICINE AND PRIMARY CARE, UNIVERSITY OF WITWATERSRAND.

SCHOOL OF HEALTH SYSTEMS AND PUBLIC HEALTH, UNIVERSITY OF PRETORIA

PROF RICHARD COOKE: DEPARTMENT OF FAMILY MEDICINE AND PRIMARY CARE, UNIVERSITY OF WITWATERSRAND.







# HOW AI IS PORTRAYED



# HOW AI CURRENTLY RUNS

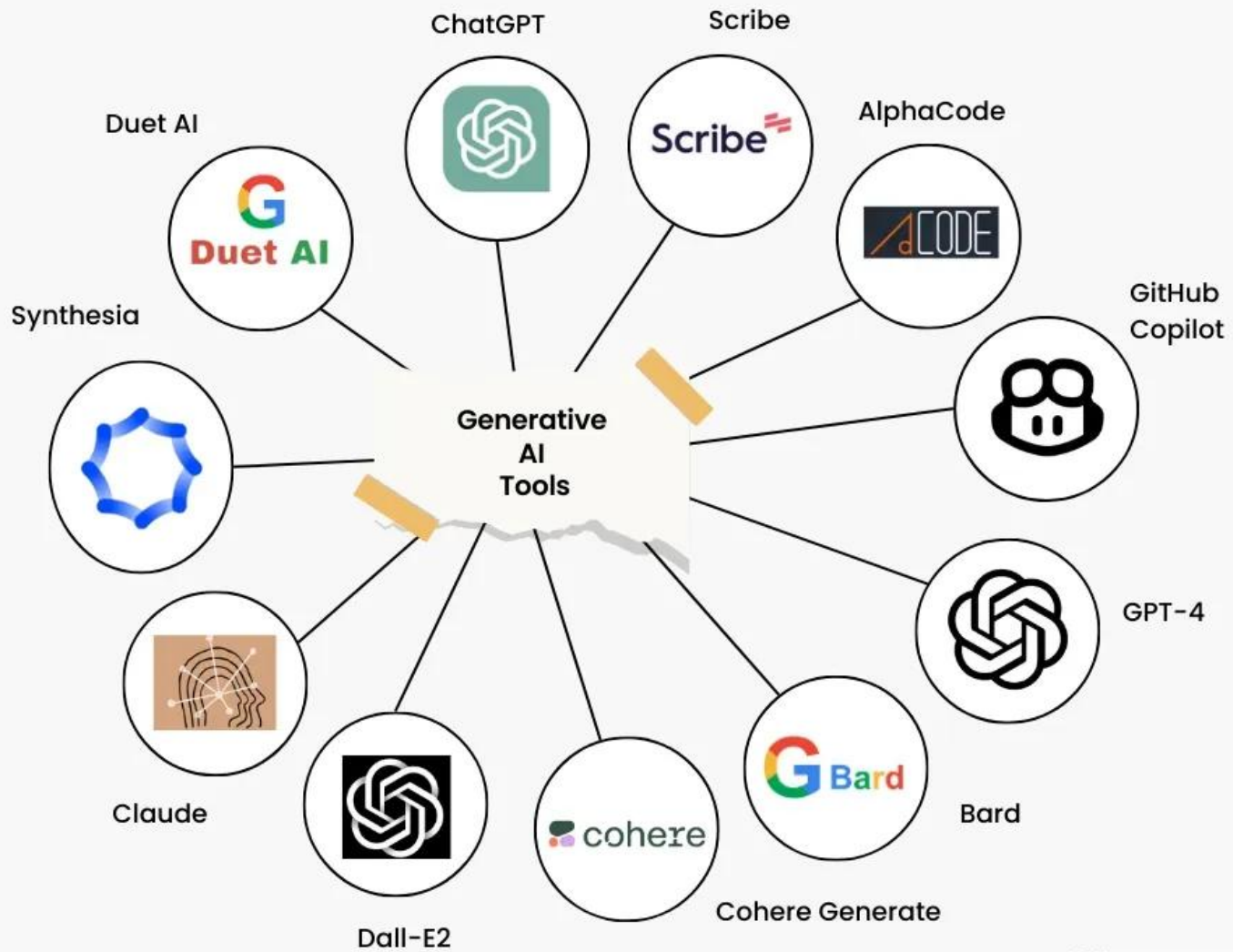


**EXAMPLES OF  
ARTIFICIAL INTELLIGENCE**

 UNMANNED DRONES	 SELF DRIVING CARS	 SMART ASSISTANT
 SPAM FILTERS ON EMAIL	 ROBOTS	 FACIAL RECOGNITION

@WWW.INDIKAAL.COM





# Introduction



- ▶ AI use in health science education is increasing
- ▶ Benefits include personalized learning, improved diagnostic training, better decision-making, enhanced clinical reasoning, and streamlined administration.
- ▶ Various AI tools are being adopted in education, positively impacting both educators and students.
- ▶ Concerns exist about educators' readiness to teach with the aid of AI, including lack of skills, ethical issues, potential job redundancy, and academic integrity challenges.

# Aim and Objectives

## **AIM**

- ▶ The aim of this project is to investigate the integration of AI in health science education within a tertiary institution

## **OBJECTIVES**

- ▶ To conduct a systematic review on AI in health science education, to identify the current variety, enablers, facilitators and impact of AI applications.
- ▶ To assess the opinions and preparedness of health science educators on the use of AI in health science service delivery, education and research.
- ▶ To assess a practical example of the teaching of data science concepts in a health systems science education context.

# Methods (1)

- ▶ This will be a cross-sectional study. An online survey will be sent to all staff members who teach within the department of family medicine and primary care
- ▶ The questionnaire was distributed, and participants will be given one (1) month to complete the survey. The survey will assess the readiness, knowledge, and perceptions of AI in health science education.
- ▶ The study will also look to provide an overview of the relationship between the use of AI in health science education and how it is perceived amongst health science educators

# Methods (2)

- ▶ An epistemological (explanatory) qualitative paradigm, focus group interviews with students enrolled in the Health Analytics module will be conducted at intervals in the last 2 weeks of the eight-week module.
- ▶ A focus group will be used to allow the participants to freely express their opinions and experiences learning how to apply AI applications in a health science systems context.

# Expected Outcomes



- ▶ The survey among health science education staff aims to offer insights into how health science educators expect to engage with AI in their fields and how they anticipate their faculty will assist them in making necessary adjustments.
- ▶ The focus group is anticipated to provide detailed perspectives from data science students and health science students regarding the use of AI applications within the health science context.

# References

- ▶ Petersson L, Larsson I, Nygren JM, Nilsen P, Neher M, Reed JE, et al. Challenges to implementing artificial intelligence in healthcare: a qualitative interview study with healthcare leaders in Sweden. *BMC Health Services Research*. 2022;22(1):850.
- ▶ Sapci AH, Sapci HA. Artificial intelligence education and tools for medical and health informatics students: systematic review. *JMIR Medical Education*. 2020;6(1):e19285.
- ▶ Arsen'eva N, Puťyatina L, Tarasova N, Tikhonov G. Advantages and Disadvantages of Using Artificial Intelligence in Higher Education. *Russian Engineering Research*. 2024;44(11):1687-90.
- ▶ Sousa MJ, Dal Mas F, Pesqueira A, Lemos C, Verde JM, Cobianchi L. The potential of AI in health higher education to increase the students' learning outcomes. *TEM JOURNAL*. 2021;10(2):488-97.
- ▶ Wang X, He X, Wei J, Liu J, Li Y, Liu X. Application of artificial intelligence to the public health education. *Frontiers in Public Health*. 2023;10:1087174.
- ▶ Gomez-Cabello CA, Borna S, Pressman S, Haider SA, Haider CR, Forte AJ. Artificial-Intelligence-based clinical decision support systems in primary care: A scoping review of current clinical implementations. *European Journal of Investigation in Health, Psychology and Education*. 2024;14(3):685-98.
- ▶ Panch T, Pearson-Stuttard J, Greaves F, Atun R. Artificial intelligence: opportunities and risks for public health. *The Lancet Digital Health*. 2019;1(1):e13-e4.
- ▶ Bozkurt A, Karadeniz A, Banerş D, Guerrero-Roldán AE, Rodríguez ME. Artificial intelligence and reflections from educational landscape: A review of AI Studies in half a century. *Sustainability*. 2021;13(2):800.
- ▶ Pantelimon F-V, Bologa R, Toma A, Posedaru B-S. The evolution of AI-driven educational systems during the COVID-19 pandemic. *Sustainability*. 2021;13(23):13501.
- ▶ Alqahtani T, Badreldin HA, Alrashed M, Alshaya AI, Alghamdi SS, bin Saleh K, et al. The emergent role of artificial intelligence, natural learning processing, and large language models in higher education and research. *Research in Social and Administrative Pharmacy*. 2023;19(8):1236-42.
- ▶ Matheny ME, Whicher D, Israni ST. Artificial intelligence in health care: a report from the National Academy of Medicine. *Jama*. 2020;323(6):509-10.
- ▶ Tolsgaard MG, Pusic MV, Sebok-Syer SS, Gin B, Svendsen MB, Syer MD, et al. The fundamentals of Artificial Intelligence in medical education research: AMEE Guide No. 156. *Medical Teacher*. 2023;45(6):565-73.
- ▶ D'Souza FR, Mathew M, Mishra V, Surapaneni KM. Twelve tips for addressing ethical concerns in the implementation of artificial intelligence in medical education. *Medical Education Online*. 2024;29(1):2330250.
- ▶ Masters K. Artificial intelligence in medical education. *Medical Teacher*. 2019;41(9):976-80.

**THANK YOU FOR LISTENING**



**ANY QUESTIONS??????????????**